

THE SCOOP

NCS, N911, True Steel Security & Helpline/CLA
December 2020

HERE WE GROW AGAIN

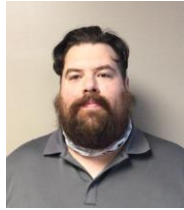
Let us give a warm welcome to the new faces of NCS!



Alexis Demers



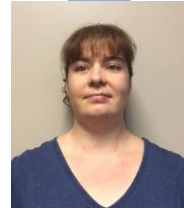
Chrissy McShane



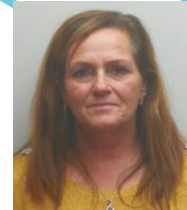
Jeffrey Pigeon



Gavin Rudolf



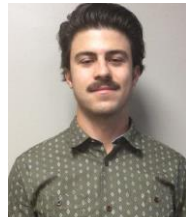
Krystal Wells



Louise Lemeiux



Sarah McDougall



Jake Whitehead



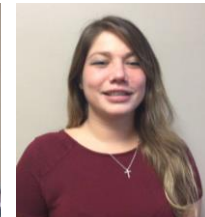
Noah Beausoleil



Melissa Plouffe



Joel Doiron



Jayde Daoust

What you do makes a difference, and you have to decide what kind of difference you want to make.

- Jane Goodall



SPOOK-TACULAR COSTUMES

Congratulations to this year's costume contest winners **Caroline Duval, Melissa Gvozdanovic, & Nicole Prevost**. Thanks to all who dressed up for Halloween this year!

HONOURABLE MENTIONS:



COSTUME CONTEST WINNERS:

Nicole Prevost, Melissa Gvozdanovic, & Caroline Duval

HAVE YOU GOT YOUR TICKET YET? CHHA ULTIMATE DREAM HOME

This year's Ultimate Dream Home 1st prize is worth \$676,835.00. Tickets are on sale in Reception for \$20 CASH until **January 6th, 2021**. Help support the [Canadian Hard of Hearing Association](#) ~ Sudbury Branch; and who knows, you might win a house out of it!

GRAND PRIZE INCLUDES:

- **Dream home** built by Belmar Builders (valued at \$590,000.00)
- **2020 Hyundai Venue Automatic** from Sudbury Hyundai (valued at \$21,775)
- **Furnishings** by Ashley Homestore (valued at \$47,000.00)
- **Appliances** by Bianco's Supercentre (valued at \$16,160.00)
- **Home Security System** from **True Steel Security** (valued at \$1,900.00)

CHHA ~ SUDBURY BRANCH

Proceeds from the Ultimate Dream Home Lottery are used to support CHHA, Sudbury Branch programs and services across North Eastern Ontario. Their programs and services include:

- | | | |
|---------------------------------------|--------------------------------------|---------------------------------|
| • Advisory & Mentoring Services | • Student Bursary | • Print Interpretation Services |
| • Hearing Loss Workshops & Classes | • Public Education | • Free Newsletters |
| • Tinnitus Workshops | • Presentation & Awareness Workshops | • Hearing Aid Fund |
| • Assistive Listening Devices Library | • Hear the Children Fund | • Community Outreach Services |
| | | • Hearing Help Centre |



CHECK IT OUT

YOU ARE BREW-TI-FUL

Warm up this winter by checking out some local coffee shops.



Salute Coffee Company
2195 Armstrong St &
73 Elm St.



Kuppajo Espresso Bar
109 Larch St



Twigg's Coffee Roasters
1332 Kingsway, Sudbury
473 Fraser St., North Bay
595 Cartier Street, North Bay

WINTER EVENTS IN SUDBURY

With COVID-19 still in bloom, this is the year to really enjoy the amazing outdoor space Sudbury has to offer in the winter months.

MAKE SOME TRACKS

With over 330 lakes and over 200kms of trails Sudbury has plenty of both urban and natural landscapes to explore. For example:

- [Lake Laurentian Conservation Area](#)
- [Kivi Park](#)
- [Windy Lake Provincial Park](#)

If you don't care what TLC says and you want to **chase some waterfalls**, check out these stunning sights this winter:

- [Bridal Veil Falls](#)
- [A.Y. Jackson Lookout](#)

HIT THE ICE

SKATING

Did you know that Sudbury has over 54 neighbourhood Rinks?

ICE FISHING

Ice fishing is a time honoured practice in Northern Ontario, and with 330 lakes in Greater Sudbury the options to find great holes are endless!

HIT THE SLOPES

Snap on your skis or board and enjoy Greater Sudbury's ski hills for some downhill excitement. Choose from Adanac, Capreol and Lively.



**KIVI
PARK**



WINTER EVENTS IN NORTH BAY & BOLTON AREA

Don't think we haven't forgotten about you! Like our in-office Sudbury staff, our remote and North Bay workers are just as important in the function and float of **NCS, N911, True Steel & Helpline/CLA**. Here are some local to-dos and must sees in the North Bay and Bolton areas this winter.

NORTH BAY

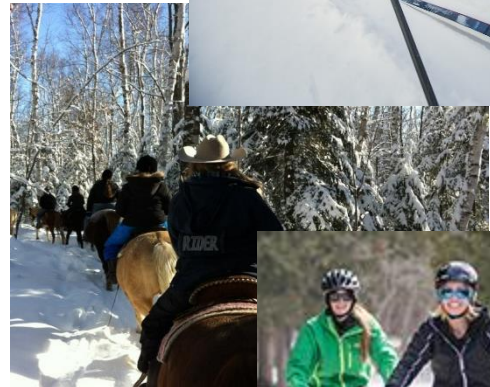
North Bay is known as the **Gateway to the North** for a good reason! Make sure to take advantage of the outdoor landscape this winter.

HIT THE SLOPES

Just a short drive from downtown North Bay, make sure to check out the Laurentian Ski Hill for some downhill skiing and snowboarding.

Not a fan of downhill? There are an incredible about of trails in the area that offer snowshoe or cross-country ski rentals, for example:

- [Canadore College Trail System](#)
- [North Bay Nordic Ski Club](#)
- [Wasi Cross-Country Ski Club](#)
- [West Nipissing Nordic Ski Trails](#)
- [Sturgeon River House Museum Guided Snowshoe](#)
- [Nature's Harmony Ecolodge Trail System](#)



SOMETHING DIFFERENT?

Winter **horseback trail riding** and **dog sledding** are a great way to get outside and enjoy the beautiful scenery. Make sure to check out **Stoneoaks Riding Stable** or **Chocpaw Expeditions** for the more adventurous at heart!

BOLTON

The Bolton area is known for its scenery, so on the trend of getting out (in a social distanced manner) explore what the local outdoors has to offer!

SOMETHING DIFFERENT?

Bolton also offers **horseback trail riding** and **fat biking** (pictured above) as two fun ways to get outside and enjoy the beautiful scenery. Make sure to check out **Teen Ranch** or **Albion Hills Conservation area** for all your active winter activities! Albion Hills Conservation area also offers snowshoeing and cross-country skiing!

LOCAL SPOTLIGHT

UP HERE

You've probably noticed over the last couple years the growth of art and colour to our city. **Up Here** is a project of **We Live Up Here**, a volunteer run Non-Profit structured around the idea that **"art can playfully reshape our community."**



"Old St. Triple JOOO's" By RISK 2019
This is Canada's Largest Mural!



"Sleeping Bear" By Lumen 2020



"Here to stay, baby" By
Sonia Ekiyor-Katimi 2020

The Mission

SAVE SUDBURY FROM SUDBURY WITH SUDBURY

CONTEST ALERT

GINGERBREAD HOUSE CONTEST

Socially distanced holidays don't have to be boring! Here at NCS we want to get our staff in the holiday spirit with a company-wide gingerbread house decorating contest.

Rules:

1. Each employee gets one gingerbread house kit.
 - You can use the contents supplied, or you can use outside supplies if you wish to provide them yourself.
2. All Gingerbread Houses must be 100% edible candy/embellishments/materials
3. Non-edible support structure material other than the baseboard may not be used.
 - No artificial interior materials, such as Styrofoam or wood, are to be used to construct or decorate the house.
 - Non-edible decorations, such as paint, ribbon, figurines, etc. may be used ONLY to decorate your base
4. You have approximately 2 weeks to complete the houses.
5. Submit a picture of your completed gingerbread house by **December 15th, 2020 at 11:59pm**
 - a. Submissions beyond this deadline will not be accepted.
6. Submit pictures of your House with the file name as "Firstname Lastname-Department 2020" to Madison.Kvaltin@northerncom.com
7. After all the submissions have been sent in, a forum will be sent out to all staff to vote for your favourite houses. There will be several categories to the contest, including:
 - a. **Most Creative**
 - b. **Most Festive**
 - c. **Most Delicious Looking**



If you are not interested in competing in the gingerbread contest, please email Madison.Kvaltin@northerncom.com and we will have your gingerbread house kit donated to the less fortunate; all extra kits will also be donated